

BRISTOL

50
YEARS
AND COUNTING

PAVING THE ROAD
TOWARDS SAFETY



FIREFIGHTING, EMERGENCY AND AMBULANCE VEHICLES MANUFACTURER



ABOUT US

Bristol Vehicles Manufacturing Division specialises in the manufacturing of vehicle bodies and engineering for all types of emergency vehicles such as Rescue, Firefighting, Emergency Medical, Command, Hazmat, and other specialised vehicles. We strive to continuously advance our products, quality, and services to address the evolving needs of the market and ensure long-term customer satisfaction.



TABLE OF CONTENTS

Manufacturing Facility



04

Design Capabilities



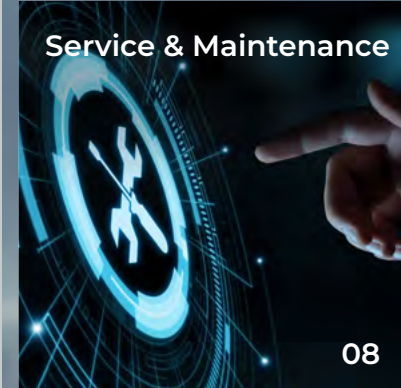
05

Quality Assurance



06

Service & Maintenance



08

| Fire Trucks

09

- » Hydraulic Platforms
- » High-Volume Industrial Pumper
- » Bristol Tanker Pumper "Tineen - The Dragon"
- » 4x4 Industrial Pumper
- » 6x4 Industrial Pumper
- » Foam Tanker
- » Port-Industrial Pumper
- » 4x2 Firefighting Water Tanker
- » Water and Foam Support Vehicle / Trailer

| Emergency Support Trailer

18

- » Foam Tote Trailer
- » Hazmat Trailer

| Firefighting Trailer

19

- » The "Kobra" Attack Trailer

| Rapid Intervention Vehicles

20

- » GMC Sierra
- » 4x4 Ford F350

| Ambulances

22

- » EN 1789 Certified Ambulances
- » EN 1789 Certified Electric Ambulances
- » Customized Ambulances
- » Type II Ambulances
- » Type I/III Ambulances

| Special Vehicles

29

- » Slide-Out Body Vehicles
- » Mobile Dental Clinic
- » Mobile Blood Donation Bus
- » Satellite Newsgathering Unit
- » Mobile Workshop Unit
- » Support Vehicle
- » Traffic Management Unit

MANUFACTURING FACILITY

Our 20,000 m² manufacturing facility is in the heart of the Industrial City of Abu Dhabi (ICAD) where we operate different sections for the design, fabrication, painting, assembly, and testing of vehicles served by a team of engineers, artisans, sales, and support staff.

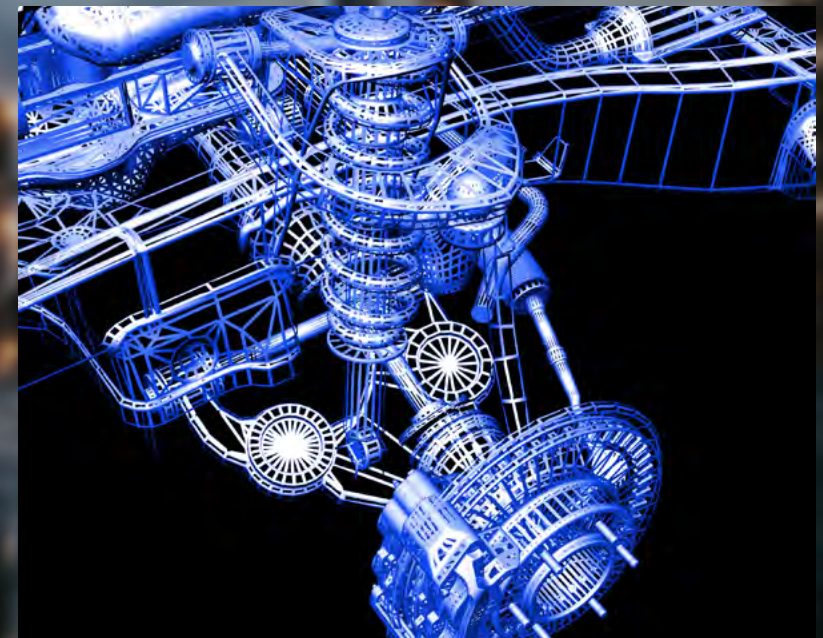


DESIGN CAPABILITIES



Our team is built up from innovative driven automotive engineers with extensive years of design experience in firefighting, emergency medical and special vehicles always in pursuit of the highest safety and industry standards. We pride ourselves in being innovative and meeting with the needs of our clients.

In addition to new products, we strive for continuous growth through research and development process. The team utilizes cutting edge 3D technology, with state-of-the-art virtual reality simulation to enable our clients to fully visualize their response solutions.



QUALITY ASSURANCE

All our vehicles are designed in accordance with international standards and chassis manufacturer specifications in line with ISO 9001 certification for Product Quality, ISO 45001 for Health and Safety and ISO 14001 for Environment Safety. Our primary emphasis is on continuous improvements and developments of products and services to achieve goals to maintain and maximize customer satisfaction by seeking the highest level of quality assurances through all phases of design, manufacturing, and testing.



VEHICLE STABILITY TILT TEST

Tests are conducted using a tilt table with the vehicle loaded to its operational weight, this is done twice in opposite direction. The vehicle must remain stable at specified tilting angle in both directions.



Testing Facility

Bristol has a comprehensive, staged verification and validation program that guarantees that all quality and certification requirements have been met.

Test comprises the following, but not limited to:

- » Pump Performance Test
- » Monitor Performance Test
- » Tank Leak Test
- » Pump and Manifold Hydrostatic Test
- » Torsion Test
- » Low Voltage Test

Where applicable tests are conducted to the latest versions of NFPA 1901.



SERVICE & MAINTENANCE

With our dedicated service and maintenance team, we are well positioned to meet our customers after-sales support needs. Furnished with a comprehensively equipped mobile workshop, this division is staffed by a team of highly qualified engineers and technicians dedicated to providing around the clock support to our customers.





Hydraulic Platforms

Bristol is a proud representative of the Bronto Skylift range of aerial firefighting and rescue products. With a stable of more than 50 products, Bronto provides platforms and towers for heights from 17 to 112 meters, meeting with the needs of the municipal, industrial, transport and utility sectors. In support of the Bronto product range we operate one of the largest authorised service centres in the Middle East.



FIRE TRUCKS

High-Volume Industrial Pumper “Al Shallal”

- » Chassis: 6x4 Mercedes Benz or Scania
- » Crew Cab: Full-Tilt extended 4-door cab with seating for 5 crew
- » Body Construction: Full-aluminium super-structure
- » Water Tank Capacity: 2,000 litre Polytank
- » Foam Tank Capacity, 5,000 litre Polytank
- » Pump: NFPA compliant 2,500 gpm midship mounted pump
- » Foam system: Balanced-Pressure foam system
- » Rear and side 6" and 2.5" suction-inlets and discharges
- » Monitor, 6,000 gpm with Hydro-Chem nozzle
- » Two rear mounted monitor 2,000 gpm each
- » Attack capabilities:
 - Two water-foam 1.5" cross-lays
 - Two Hydro-Chem cross-lays
 - One 1.5" dedicated dry chemical attack line
- » A roof mounted hose bed with provision for 6", 3" and 2.5" hoses
- » 225 kg dry chemical extinguishing system
- » The pump controls are top mounted that provides the pump operator with a 360° view of the fireground offering the best situational awareness found on any pumper





Bristol Tanker Pumper "Tineen - The Dragon"

- » A 30,000 litre water tank with control panel and body-mounted fill gauges
- » Single stage direct-mount, auto-priming centrifugal pump rated at 9,375 l/min (2,500 gpm) at 10.3 Bar (150 psi) driven by a 350 HP diesel engine mounted within an enclosure
- » Two 152 mm (6") and two 64 mm (2.5") discharges
- » Three 152 mm (6") suction inlets with 64 mm (2.5") adaptor
- » Two 152 mm (6"), four 64 mm (2.5") and one 300 mm (12") hydrant-fill inlets
- » Two large diameter hose beds carrying 150 m x 152 mm (6") Storz coupled, double-jacket supply hose
- » One hose bed housing 60 m x 64 mm (2.5") British Instantaneous coupled fire hose
- » One hose bed housing 8 m x 300 mm (12") Storz coupled supply hose. This hose is handled with a 24 V electrical winch
- » A self-protection system is provided to protect the vehicle in instances of high radiant heat



FIRE TRUCKS

4x4 Industrial Pumper

- » Chassis: 4x4 Mercedes Benz Actros
- » Crew-cab: Two-door in-body crew cab with seating for 2+4 crew members
- » Body: Super-Structure made of aluminium extrusions and steel profiles
- » Compartments: Dual side with aluminium roller shutter doors
- » Water Tank: 3,000 litres Polytank
- » Foam Tank: 2,000 litres Polytank
- » Pump: 3,000 l/min LPM@10 bar rear-mount pump
- » Quantity and type of discharges
- » Dry Chemical Powder System: 500 kg
- » Remote control water/foam monitor





8x4 Industrial Pumper

- » Chassis: 8x4 Mercedes-Benz Arocs 4145
- » Cab : Single cab, Seating for 1 driver + 1 crew member
- » Crane: Rear mounted PALFINGER - PK30002 Crane (Max. lifting capacity - 10000 kg)
- » Winch : Front bumper mounted Powerwinch PW20000E 24V (Rated line pull - 9090 kg)
- » Generators (5 kva Three phase & 3 kva Single phase Honda generators)
- » Portable cutting system.
- » SCBA Sets
- » SCBA Compressors
- » Battery operated rescue saw , Electric power cutter , Engine drive all round saw (Husqvarna)
- » Confined Space Rescue (SKED-EVAC CSR)
- » Rescue Swimmer Set Deluxe
- » Protective clothing's (Chemical protective suits , Steam-protective suits , Heat protection suits , Firefighting suits)
- » Set of hydraulic rescue tools (Holmatro Cutter, Spreader, Ram, Gas/Petrol Duo Pump, PowerShore Strut MS 2 L 2+ with accessories etc.)
- » Set of Lifting bags (5 ton , 21 ton & 37 ton , Holmatro)
- » Portable pump
- » Various rescue tools

FIRE TRUCKS

Foam Tanker

Specially treated internal foam tanker to resist corrosion.

- » Chassis: 6x4 Mercedes-Benz Actros,
- » Tank Body: 316L stainless-steel
- » Foam Tank: 25,000 litres
- » Foam Pump: 100 L foam manufactured including a 1,130 l/min 300 PTO-driven foam pump





Port-Industrial Pumper

- » Chassis: 6x4 Iveco Model, Euro Tracker chassis
- » Crew Cab: 4-door with seating for 4 crew
- » Body: Super-structure made of aluminium extrusions and steel profiles
- » Compartments: Dual-sided with aluminium roller shutter doors
- » Water Tank: 6,000 litres 316L Stainless-Steel
- » Foam Tank: 600 litres 316L Stainless-Steel
- » Pump: Midship mounted 1,250 gpm low and high pressure
- » Foam System: Round the Pump
- » Discharges and gauge (Pressure, Vacuum)
- » Manual control water/foam monitor 2,600 litre/min



FIRE TRUCKS

4x2 Firefighting Water Tanker

- » Chassis: Hino 300 series 4x2 chassis
- » Single cab for 3 firefighters (includes the driver)
- » Super structure made of aluminum/steel profiles
- » Storage lockers each sides closed by aluminum roller shutters
- » Pump: Petrol engine driven pump Approx.1800 lit/min @10 bar
- » Water tank: 550 gallon made of made of Stainless-Steel grade 316 L
- » Foam tank: 50 gallon made of made of Stainless-Steel grade 316 L
- » 10,000 lbs. electrical winch
- » Light mast with 4xLED food lights with 5 m extendable height from the roof level
- » Various fire fighting equipment
- » Warning lights package





Water and Foam Support Vehicle / Trailer

- » Tank: Mild Steel or Stainless-Steel
- » Water Capacity: 25,000 to 40,000 litres
- » Foam Capacity: 5,000 litres
- » Pump: Engine driven 4,800 litres / min at 8 bar
- » Manual or remote operated monitor 4,000 litres / min at 10 bar
- » Manual or electric operated hose reel



EMERGENCY SUPPORT TRAILER

Foam Tote Trailer

- » Trailer Type: Flatbed trailer:
- » Capacity: Total of 8 totes per trailer (1,000 liters each tote)
- » Axles: 2 x 14 ton multi leaf suspension axles
- » Material of Construction: Body will be made of mild steel
- » Foam inlets: 8 Nos 51 mm inlets from totes (Male PP camlocks connection), 4 inlets on each side of manifold.
- » Foam outlets 6 Nos.102 mm outlets.
- » Foam outlets to fixed monitor.
- » Water flush one adapter will be provided to connect the 64mm (2.5") BIC.
- » Set of suction hoses and other accessories based on application and client's requirements

Hazmat Trailer

- » Dual axle trailer with adequate carrying capacity
- » Five storage lockers, two on each side, and one at rear closed by roll up shutters.
- » Standard warning lights and electrical socket
- » Portable engine driven fire pump
- » Foam generator
- » Chemical protective suits
- » Firefighting delivery hoses
- » Light mast
- » Diesel engine generator
- » Hazmat and oil spill handling equipment





The “Kobra” Attack Trailer

- » A fixed Master Stream capable of flowing 5,678 l/min (1,500 gpm) water/foam and 3,785 l/min (1,000 gpm) water/foam/Hydro-chem™
- » Two semi-fixed Daspit Tools Master Stream capable of flowing 5,678 l/min (1,500 gpm) water/foam and 3,785 l/min (1,000 gpm) water/foam/Hydro-chem™. The Daspit Tools can be removed to act as ground monitors.
- » Two 60-meter 38 mm (1½”) water/foam double-jacket cross-lays
- » One 60-meter 38 mm (1½”) water/foam/Hydro-chem™ double-jacket cross-lay
- » One 60-meter 64 mm (2½”) rich foam solution double-jacket supply line for Daspit Tool Master streams
- » Two 60-metre 152 mm (6”) double-jacket supply lines
- » Around-the-Pump (WATP) jet ratio controller for remote foam proportioning
- » Foam Wand
- » Equipment storage compartments
- » Telescopic mast lights
- » Battery pack
- » Self-defence system

RAPID INTERVENTION VEHICLES

Rapid Intervention Vehicle

- » Chassis: GMC, Chevrolet and Ford
- » Crew Cab: 3 crew with SCBA jump-seats
- » Body: Super structure made of aluminium extrusions and steel profiles
- » Compartments: Dual sides with aluminium roller shutter doors
- » Pump: High-Pressure pump with 42 LPM@100 bar
- » Water Tank: 450 litres GRP
- » Foam Tank: 50 litres GRP
- » High-pressure 50 m hose reel with High-Pressure nozzle
- » A range of rescue and hazmat equipment
- » Winch: 8,000 lbs



RAPID INTERVENTION VEHICLES



Rapid Intervention Vehicle

- » Chassis: GMC, Chevrolet and Ford
- » Crew cab: 3 crew with SCBA jump-seats
- » Body: Aluminium
- » Water Tank: 350 litres GRP
- » Foam Tank: 20 litres GRP
- » Pump: High-Pressure pump with 42 LPM@100 bar
- » Discharges and gauge
- » Hose reel with 50 m hose
- » Winch: Front-Mounted 6 ton winch
- » Set of hydraulic rescue tools
- » Thermal imaging camera



AMBULANCES

EN 1789 Certified Ambulance

- » Chassis options: Mercedes Benz Sprinter
- » Body: GRP/ABS
- » Glass fibre reinforced (GRP) roof
- » ABS wall with integrated sliding window between the driver and patient compartment
- » Welded fixation points for stretcher and seating
- » Integrated room, emergency external lights
- » One piece floor, anti-slip and easy to clean
- » Ceiling supply centre
- » One door seat
- » One or two rotating front facing seats
- » Partition-wall medical cabinets
- » 12 V/220 V electrical system
- » Medical equipment





EN 1789 Certified Ambulance

- » Chassis options: Mercedes Benz Sprinter chassis cab
- » Body: Aluminium extrusions and sheeting
- » Compartments: External storage compartments to accommodate medical equipment and oxygen
- » Rear twin-leaf doors
- » Side-Entry door
- » 12 V/220 V electrical system
- » Medical equipment



AMBULANCES

EN 1789 Certified Ambulance

- » Base Vehicle: FORD TRANSIT T-350 HR, 148" WB, 4 x 2 VAN with ambulance prepackage.
- » Interior Modifications:
 - Insulated patient compartment with white aluminum walls.
 - Marine-grade plywood floor, non-slip and waterproof.
 - ALS cabinet & INTRAXX Integrated Vehicle System.
 - Seating for 3 medical personnel (1 center, 2 RH side).
 - Standard chair cot with mattress and restraints.
 - Built-in oxygen and suction systems, IV poles, first aid kit..
- » Electrical System:
 - Auxiliary power (extra batteries, inverter/charger) for medical equipment.
 - 10m auto-eject shoreline with cable.
 - 12V & 230V sockets.
 - Roof ventilation, spotlights, refrigerator.
 - Emergency lights, sirens, horn, backup camera, sensors.
 - Two-way radio or intercom.





EN 1789 Certified Electric Ambulance

» Key features:

- Environmentally sustainable
 - Does not produce CO₂ and oxide emissions Nitrogen (NOx) custom circulating, which means that your widespread adoption has the potential to improve air quality, especially in urban areas drastically
 - Reduce maintenance costs versus fuel. Not only is the cost per mile of 'fuel' (electricity), there are fewer moving parts and fewer hard on the brakes, reducing maintenance costs
- » ABS wall with integrated sliding window between the driver and patient compartment
 - » Welded fixation points for stretcher and seating
 - » One piece floor, anti-slip and easy to clean
 - » Ceiling supply centre
 - » One doctor seat
 - » One/two rotating front facing seats
 - » Partition wall medical cabinets
 - » Integrated roof emergency external lights
 - » Medical equipment based on client's requirement
 - » 12V/220V electrical system
 - » Oxygen System



AMBULANCES

Customized Ambulances

- » Depending on the client's requirements, the ambulance conversion could be carried out on all types of vans, minibuses or 4x4 SUVs and could be equipped with various medical equipment.
- » Each ambulance is designed specifically for the client's particular application.





Type II Ambulance

- » Chassis options: Chevrolet Express/GMC Savana Van
- » Body: Aluminum/Intecel Sheet
- » Extended GRP roof with steel reinforcement floor in marine grade plywood bonded with extra heavy duty vinyl sheet
- » Attendant seat
- » Medical cabinets
- » 12 V/220 V electrical system
- » Medical equipment



AMBULANCES

Type I/III Ambulance

- » Chassis options: Ford F350/GMC Sierra
- » Body: Aluminum/Intecel sheets
- » Compartments: External storage compartment
- » Attendant seat
- » Squad bench
- » Medical cabinets
- » 12 V/220 V electrical system
- » Medical equipment



Slide-Out Body Vehicle

Expert in the manufacturing of slide-out bodies providing up to one meter of expanded floor space per side. These features can be offered on a wide range of chassis including rigid chassis vehicles as well as semi-trailers. Vehicle configurations are highly customisable to client's needs including the following applications:

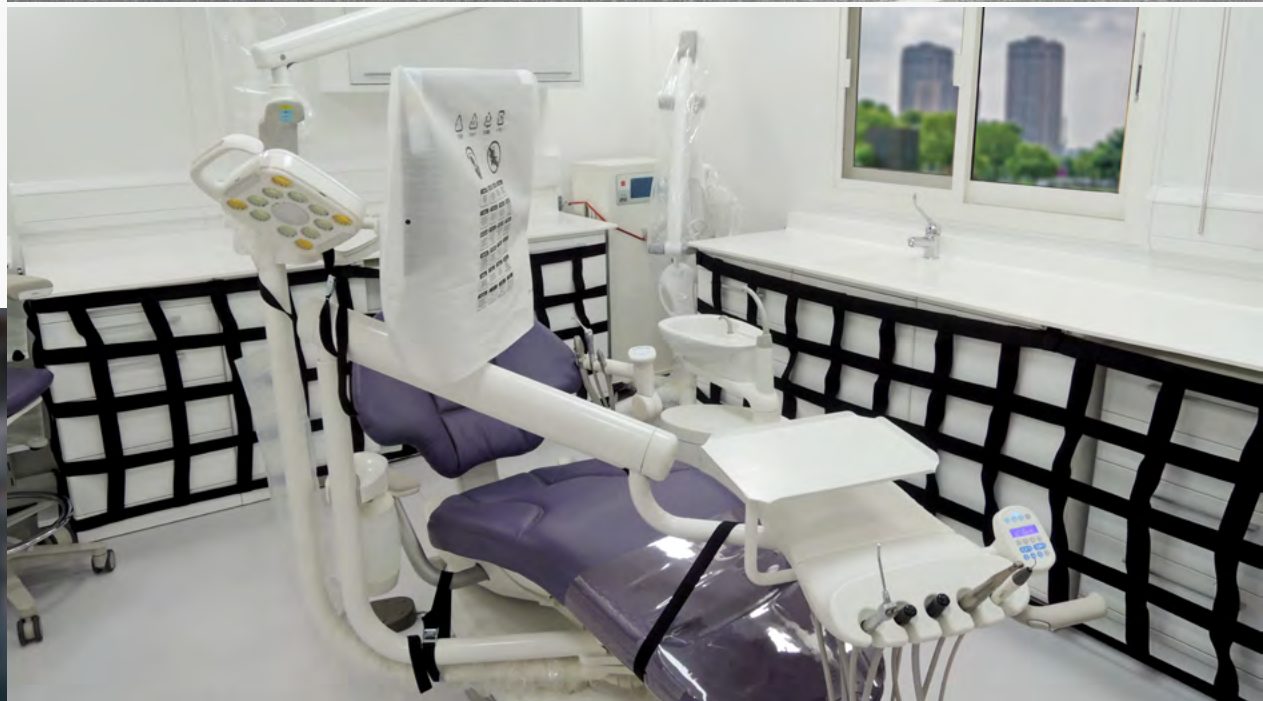
- » Incident Command Vehicles
- » Mass Casualty Management Units
- » Mobile Hospitals and Theatres
- » Law Enforcement Military Command, Intelligence, Control and Communications Vehicles
- » Drone Ground Base Units
- » Field Offices
- » Field Accommodation
- » Mobile Homes



SPECIAL VEHICLES

Mobile Dental Clinic

- » Body: The super-structure is fabricated from aluminium extrusions and steel profiles covered with aluminium sheeting
- » Modules include a dental clinic, reception area and toilet
- » The dental clinic contains the following:
 - Foldable doctor table with chair
 - Chair for patient
 - Complete dental chair
 - A sink with faucet
- » Fresh water tank connected to the dental chair
- » The reception area contains the following:
 - Reception table with chair
 - Overhead cabinet
 - Bench seat for the waiting patients





Mobile Blood Donation Bus

- » Reception Area with 4 chairs
- » Doctor Room: Two nos. small doctor rooms one each side including cabinets/drawers for files storage, doctor chair, small table and one blood donor chair
- » Blood Collection area:
 - 4 nos. Bloodmobile Chair (donor chair)
 - 2 nos. of working station between the donor beds
 - 4 nos. of Blood Bag Mixer and Bench Tube Sealer for each donor bed
 - Curtain for separating each donor bed for privacy 1 TV for each donor bed
- » Refreshment Area:
 - 2 nos. chairs
 - One no. fridge for storing refreshment drinks/ items Four nos. Mobile blood transport case, ice pack.
 - One no. Helmer – Under counter Laboratory Refrigerator
 - Sink with faucet facility (including 200 liter fresh/ waste water tank)
 - All rooms/areas are separated by curtains (or) doors
 - Flooring in marine grade water proof plywood covered with heavy-duty washable anti-slip vinyl sheet

SPECIAL VEHICLES

Satellite Newsgathering Unit

- » Chassis: Ford Transit/Mercedes Benz Sprinter
- » Working table with rotating chairs
- » LED Monitor fixed on the wall
- » IT racks to meet client's requirement





Mobile Workshop

Mobile workshops and service units can be built on any type of van or truck chassis. The internal configuration can accommodate amongst others work benches, tool cabinets, a generator, a compressor and 12 V/220 V electrical system.

Tools, facilities, and configuration are highly customisable and vary from one end-user to another depending on the purpose the unit is built for.



SPECIAL VEHICLES

Support Vehicle

- » Chassis: 4x2 Isuzu or equivalent commercial chassis
- » Body: The super-structure made of aluminium extrusions and steel profiles with side-doors
- » The interior is fitted with storage shelves and and tracks based on client's requirements
- » A 50 KVA diesel generator is provided in the forward compartment of the super-structure
- » Exterior compartments are provided for the storage of electrical equipment including cable drums and flood lights
- » Pneumatically operated 500 kg tail-lift is provided at the rear





Traffic Management Unit

- » Chassis: Ford F350 crew-cab chassis
- » Body: Aluminum body
- » Storage compartments: Dual-sided enclosed by hinged doors
- » Light mast with LED flood lights
- » 2 kVA engine generator
- » LED flashing arrow board
- » Miscellaneous traffic management equipment





BRISTOL بريستول فاير انجنييرنج للصناعات ذ.م.م.
FIRE ENGINEERING INDUSTRIES L.L.C

P.O.Box 2617, Abu Dhabi, UAE

Tel: +971 2 557 55 51

Fax: + 971 2 557 55 50

vehicles@bristol-fire.com

vmd.bristol-fire.com